

Grade 1 Scales

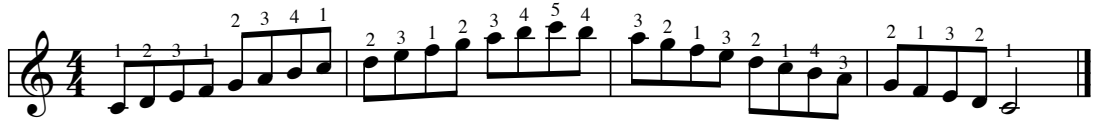
Right Hand

All these right hand scales except F major have the same standard scale fingering

MAJOR SCALES

C Major

4th finger on B



G Major

4th finger on F sharp



D Major

4th finger on C sharp



F Major

N.B. F major is not standard fingering. Thumb on F and C, 4th finger on B flat and top F



MINOR SCALES

a minor

4th finger on G sharp



d minor

4th finger on C sharp



Left Hand

MAJOR SCALES

All these left hand scales have the same standard scale fingering

C Major

4th finger on D



G Major

4th finger on A



D Major

4th finger on E



F Major

4th finger on G



MINOR SCALES

a minor

4th finger on B



d minor

4th finger on E



Contrary Motion Scale

Hands Together

C Major

Musical notation for the C Major Contrary Motion Scale. The piece is written for piano with both hands together. The right hand (treble clef) plays an ascending scale: C4 (finger 1), D4 (2), E4 (3), F4 (4), G4 (5), F4 (4), E4 (3), D4 (2), C4 (1). The left hand (bass clef) plays a descending scale: C4 (finger 1), B3 (2), A3 (3), G3 (4), F3 (5), G3 (4), A3 (3), B3 (2), C4 (1). The piece consists of two measures, each with a repeat sign at the end.

Broken Chords Right Hand

C Major

Musical notation for the C Major Broken Chords exercise in the right hand. The piece is written in treble clef. It consists of two measures, each with a repeat sign at the end. The notes and fingerings are: Measure 1: C4 (1), E4 (3), G4 (5), C5 (1), D5 (2), E5 (5); Measure 2: C5 (5), B4 (3), A4 (1), G4 (5), F4 (3), E4 (1), D4 (5).

G Major

Musical notation for the G Major Broken Chords exercise in the right hand. The piece is written in treble clef with a key signature of one sharp (F#). It consists of two measures, each with a repeat sign at the end. The notes and fingerings are: Measure 1: G4 (1), B4 (3), D5 (5), G5 (1), A5 (2), B5 (5); Measure 2: G5 (5), F#5 (3), E5 (1), D5 (5), C5 (3), B4 (1), A4 (5).

F Major

Musical notation for the F Major Broken Chords exercise in the right hand. The piece is written in treble clef with a key signature of one flat (Bb). It consists of two measures, each with a repeat sign at the end. The notes and fingerings are: Measure 1: F4 (1), A4 (3), C5 (5), F5 (1), G5 (2), A5 (5); Measure 2: F5 (5), Eb5 (3), D5 (1), C5 (5), Bb4 (3), A4 (1), G4 (5).

a minor

Musical notation for the a minor Broken Chords exercise in the right hand. The piece is written in treble clef with a key signature of no sharps or flats. It consists of two measures, each with a repeat sign at the end. The notes and fingerings are: Measure 1: A4 (1), C5 (3), E5 (5), A5 (1), B5 (2), C6 (5); Measure 2: A5 (5), G5 (3), F5 (1), E5 (5), D5 (3), C5 (1), B4 (5).

d minor

Musical notation for the d minor Broken Chords exercise in the right hand. The piece is written in treble clef with a key signature of two flats (Bb, Eb). It consists of two measures, each with a repeat sign at the end. The notes and fingerings are: Measure 1: D4 (1), F4 (3), Ab4 (5), D5 (1), Eb5 (2), F5 (5); Measure 2: D5 (5), C5 (3), Bb4 (1), Ab4 (5), Gb4 (3), F4 (1), Eb4 (5).

Broken Chords

Left Hand

C Major

G Major

F Major

a minor

d minor

Notes for Scales

The aim is to play legato and evenly.

Legato for the pianist means "Join the bottoms of the notes together"

Think of the notes in groups of four

Learn the standard fingering 1-2-3-1-2-3-4-(5)

Learn two things about each scales:

which black notes are in which scale

what the pattern of playing the scale feels like

Try and remember for each scale, what note the fourth finger is playing (always the seventh note of the scale)

C major has no sharps or flats

G major has an F sharp

D major has an F sharp and a C sharp (Fish and Chips)

F major has a B flat

a minor has a G sharp (but it isn't in the key signature)

d minor has a B flat in the key signature, and also a C sharp

One you can play the broken chords in C, try them with your eyes closed.

Then you will be able to play them in any key needed at Grade 1.

All the arpeggios and broken chords are played only on the white notes at Grade 1.